

Cavalier King Charles Spaniels		2020 Mid-Year (through July 2020)													
Metric	2008	2009	2010	2011	2012	2013	2014	2015	2016	2017	2018	2019	2020	Notes	
Registered Litters	4,294	4,131	3,897	3,577	3,561	3,453	3,423	3,506	3,771	4,134	4,625	4,904	3,255	# AKC litters registered each year	
Litter Complement	16,375	15,808	14,532	13,569	13,410	13,212	13,151	13,390	14,429	15,947	17,689	19,228	12,768	# Pups in each year's litters (known as the "Complement")	
Average Complement	3.81	3.83	3.73	3.79	3.77	3.83	3.84	3.82	3.83	3.86	3.82	3.92	3.92	Average # of pups per litter	
Individually Registered Pups (to date)	7,365	6,849	6,429	6,231	6,142	6,173	6,398	6,478	7,116	7,787	8,508	8,291	3,423	# Pups from each year's litters individually registered (to date)	
Actual Return Rate (to date)	45.0%	43.3%	44.2%	45.9%	45.8%	46.7%	48.7%	48.4%	49.3%	48.8%	48.1%	43.1%	26.8%	% Pups from each year's litters individually registered (to date)	
Limited Registrations (to date)	2,366	2,270	2,199	2,244	2,250	2,328	2,608	2,755	2,959	3,290	3,498	3,387	1,669	# Limited Registrations from each year's litters (to date)	
% Complement Registered Limited (to date)	14.4%	14.4%	15.1%	16.5%	16.8%	17.6%	19.8%	20.6%	20.5%	20.6%	19.8%	17.6%	13.1%	% Pups from each year's litters Registered as Limited (to date)	
Revoked Limited (to date)	14	15	19	23	12	14	22	16	22	29	28	13	1	# Revoked Limited Dogs from each year's litters (to date)	
Litters from Revoked Limited (to date)	14	15	18	21	12	14	22	16	22	26	28	13	1	Litters involving each year's Revoked Limited (to date)	
Complement Bitches Bred	1,315	1,320	1,249	1,119	1,182	1,193	1,169	1,301	1,427	1,411	1,019	320	31	Bitches from each year's litters that have been bred (to date)	
Complement Dogs Bred	640	544	538	484	500	476	456	484	536	588	493	205	18	Males from each year's litters that have been bred (to date)	
Total Complement Bred (to date)	1,955	1,864	1,787	1,603	1,682	1,669	1,625	1,785	1,963	1,999	1,512	525	49	Total from each year's litters that have been bred (to date)	
% Complement Bred (to date)	11.9%	11.8%	12.3%	11.8%	12.5%	12.6%	12.4%	13.3%	13.6%	12.5%	8.5%	2.7%	0.4%	% of each year's litters that have been bred (to date)	
Complement Bitches in Conformation	555	484	529	479	447	458	387	387	395	352	401	243	4	# Bitches from each year's litters in Conformation (to date)	
Complement Dogs in Conformation	390	348	351	328	297	291	285	246	240	263	264	196	5	# Males from each year's litters in Conformation (to date)	
Total Complement in Conformation (to date)	945	832	880	807	744	749	672	633	635	615	665	439	9	Total from each year's litters in Conformation (to date)	
% Complement in Conformation (to date)	5.8%	5.3%	6.1%	5.9%	5.5%	5.7%	5.1%	4.7%	4.4%	3.9%	3.8%	2.3%	0.1%	% of each year's litters in Conformation (to date)	
Total Complement in Companion (to date)	117	132	126	110	94	104	103	92	103	85	44	7	1	Total from each year's litters in Companion (to date)	
% Complement in Companion (to date)	0.71%	0.84%	0.87%	0.81%	0.70%	0.79%	0.78%	0.69%	0.71%	0.53%	0.25%	0.04%	0.01%	% of each year's litters in Companion (to date)	
Total Complement Placing in Performance (to date)	10	17	17	16	35	28	45	26	33	27	18	4	-	Total from each year's litters placing in Performance (to date)	
% Complement Placing in Performance (to date)	0.1%	0.1%	0.1%	0.1%	0.3%	0.2%	0.3%	0.2%	0.2%	0.2%	0.1%	0.0%	0.0%	% of each year's litters placing in Performance (to date)	

AKC Dog Registrations	7,392	7,060	6,472	6,695	6,407	6,358	6,411	6,603	6,974	7,642	8,463	8,932	6,279	# Registered from AKC Litters during each year
FSS Registrations	-	-	-	-	-	-	-	-	-	-	-	-	-	# of FSS Dog Registrations each year
Conditional Registrations	30	29	23	18	14	6	34	17	35	53	73	78	40	# of Conditional Registrations each year
Open Registrations	2	-	-	1	-	-	-	-	-	-	-	-	-	# of Open Registrations each year
Foreign Registrations	201	182	143	139	133	106	99	143	150	127	157	194	102	# of Foreign-born Registrations each year
Total Dogs Registered	7,625	7,271	6,638	6,853	6,554	6,470	6,544	6,763	7,159	7,822	8,693	9,204	6,421	Total Dog Registrations each year
Unique Bitches Bred (each year)	3,654	3,514	3,317	3,066	3,058	2,935	2,863	2,945	3,126	3,360	3,778	4,018	3,072	Unique # bitches bred each year
Unique Dogs Bred (each year)	1,964	1,985	1,851	1,665	1,631	1,571	1,543	1,514	1,552	1,662	1,792	1,970	1,612	Unique # males bred each year
Total Bred (each year)	5,618	5,499	5,168	4,731	4,689	4,506	4,406	4,459	4,678	5,022	5,570	5,988	4,684	Unique # bred each year
Unique Bitches in Conformation (each year)	1,269	1,292	1,230	1,233	1,186	1,095	1,112	1,090	1,000	977	949	1,008	496	Unique # of bitches in Conformation each year
Unique Dogs in Conformation (each year)	1,087	992	1,026	1,019	913	904	888	857	785	749	741	796	420	Unique # of males in Conformation each year
Total Unique in Conformation (each year)	2,356	2,284	2,256	2,252	2,099	1,999	2,000	1,947	1,785	1,726	1,690	1,804	916	Unique # in Conformation each year
% Change Conformation		-3.1%	-1.2%	-0.2%	-6.8%	-4.8%	0.1%	-2.7%	-8.3%	-3.3%	-2.1%	6.7%	-49.2%	YOY % Change Conformation total dogs
Unique Bitches in Companion (each year)	188	232	234	268	268	249	253	246	247	268	259	241	156	Unique # of bitches in Companion each year
Unique Dogs in Companion (each year)	183	201	224	234	234	242	255	241	230	216	229	221	145	Unique # of males in Companion each year
Total Unique in Companion (each year)	371	433	458	502	502	491	508	487	477	484	488	462	301	Unique # in Companion each year
% Change Companion		16.7%	5.8%	9.6%	0.0%	-2.2%	3.5%	-4.1%	-2.1%	1.5%	0.8%	-5.3%	-34.8%	YOY % Change Companion total dogs
Unique Bitches Placing in Performance (each year)	-	-	-	-	-	9	17	40	27	39	46	64	19	Unique # of bitches placing in Performance each year
Unique Dogs Placing in Performance (each year)	-	-	-	-	-	12	22	38	28	40	51	53	19	Unique # of males placing in Performance each year
Total Unique Placing in Performance (each year)	-	-	-	-	-	21	39	78	55	79	97	117	38	Unique # placing in Performance each year
% Change Performance		#DIV/0!	#DIV/0!	#DIV/0!	#DIV/0!	#DIV/0!	85.7%	100.0%	-29.5%	43.6%	22.8%	20.6%	-67.5%	YOY % Change Performance total dogs placing

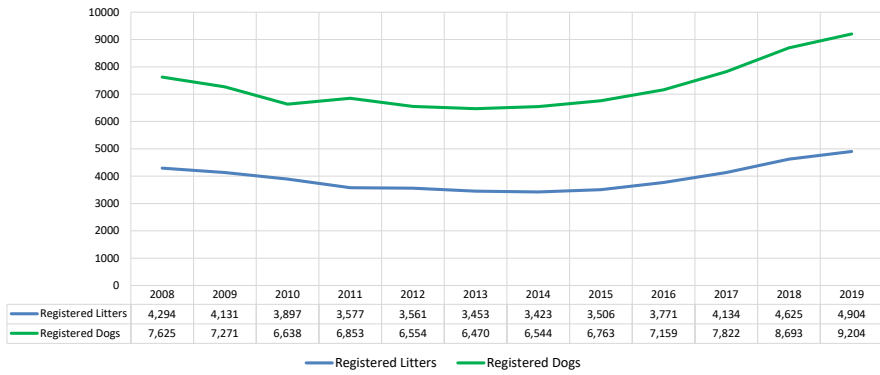
% Change YOY	2008	2009	2010	2011	2012	2013	2014	2015	2016	2017	2018	2019
Registered Litters	N/A	-3.8%	-5.7%	-8.2%	-0.4%	-3.0%	-0.9%	2.4%	7.6%	9.6%	11.9%	6.0%
Litter Complement	N/A	-3.5%	-8.1%	-6.6%	-1.2%	-1.5%	-0.5%	1.8%	7.8%	10.5%	10.9%	8.7%
Registered Dogs	N/A	-4.6%	-8.7%	-4.4%	-1.3%	-1.3%	0.0%	3.3%	5.9%	9.3%	11.1%	5.9%

These %'s are calculated to show the change each year from the previous year.

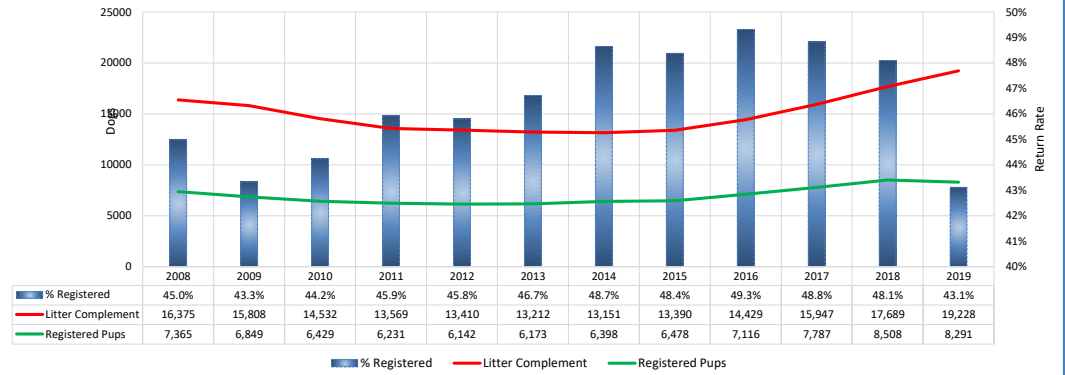
% Change Relative 2008	2008	2009	2010	2011	2012	2013	2014	2015	2016	2017	2018	2019
Registered Litters	0.0%	-3.8%	-9.2%	-16.7%	-17.1%	-19.6%	-20.3%	-18.4%	-12.2%	-3.7%	7.7%	14.2%
Litter Complement	0.0%	-3.5%	-11.3%	-17.1%	-18.1%	-19.3%	-19.7%	-18.2%	-11.9%	-2.6%	8.0%	17.4%
Registered Dogs	0.0%	-4.6%	-12.9%	-10.1%	-14.0%	-15.1%	-14.2%	-11.3%	-6.1%	2.6%	14.0%	20.7%

These %'s are calculated to show the change each year compared to 2008.

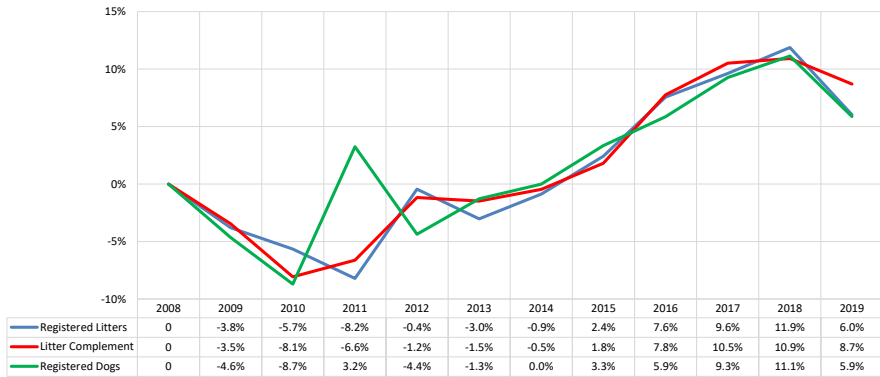
AKC Dog & Litter Registrations



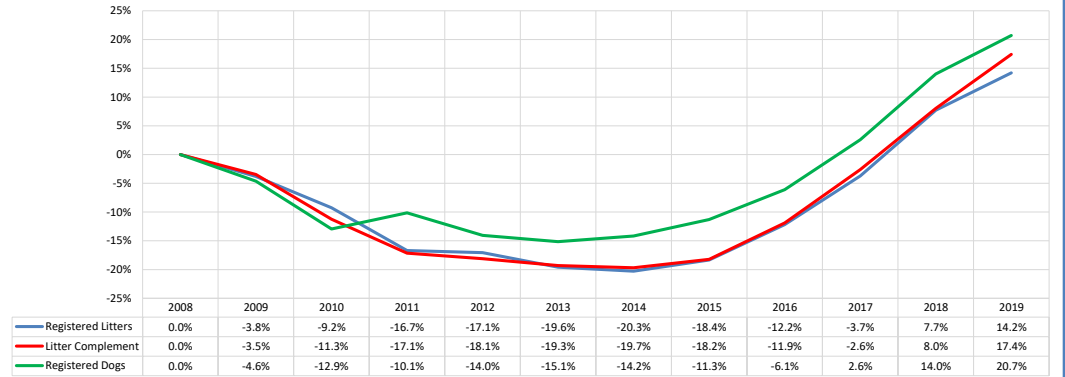
% of Each Year's Litter Complement that were Eventually Registered



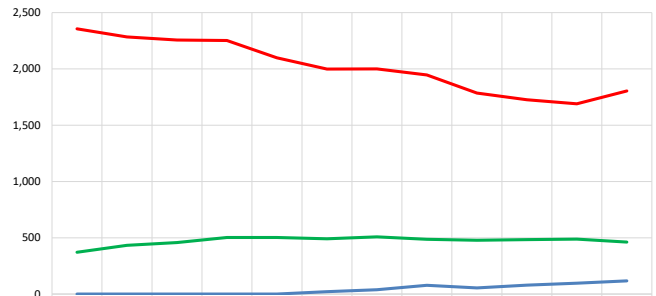
% Change from Previous Year (YOY)



% Change Relative to 2008

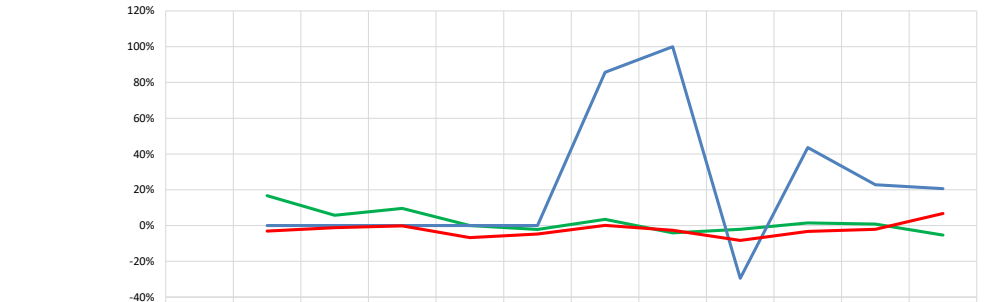


Competing: Total Unique Dogs by Sport Each Year



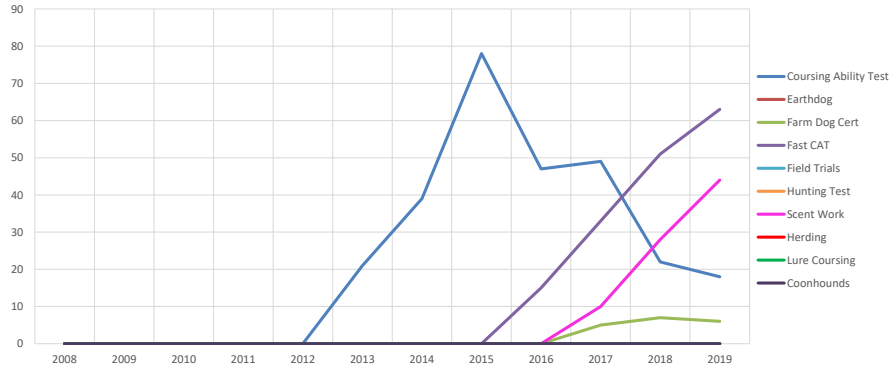
Year	2008	2009	2010	2011	2012	2013	2014	2015	2016	2017	2018	2019
Total Unique in Companion (each year)	371	433	458	502	502	491	508	487	477	484	488	462
Total Unique Placing in Performance (each year)	-	-	-	-	-	21	39	78	55	79	97	117
Total in Conformation (each year)	2,356	2,284	2,256	2,252	2,099	1,999	2,000	1,947	1,785	1,726	1,690	1,804

Competing: % Change Unique Total Dogs Year over Year by Sport

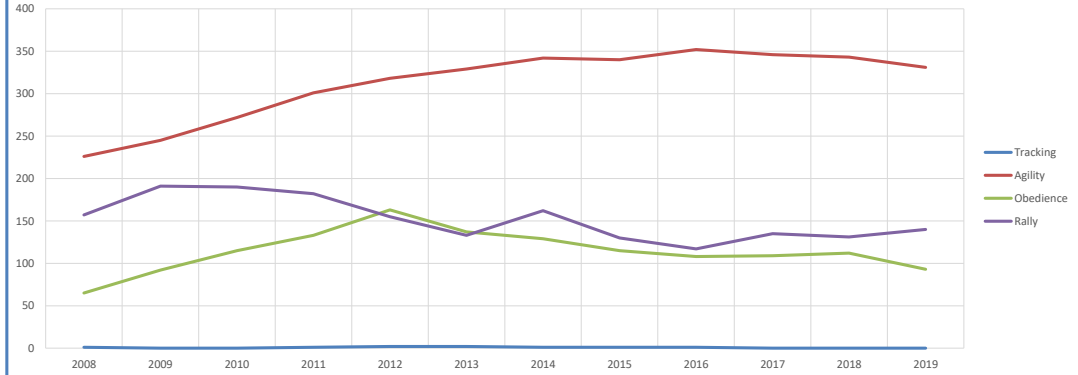


Year	2008	2009	2010	2011	2012	2013	2014	2015	2016	2017	2018	2019
% Change Companion	-	16.7%	5.8%	9.6%	0.0%	-2.2%	3.5%	-4.1%	-2.1%	1.5%	0.8%	-5.3%
% Change Performance	0.0%	0.0%	0.0%	0.0%	0.0%	0.0%	85.7%	100.0%	-29.5%	43.6%	22.8%	20.6%
% Change Conformation	-	-3.1%	-1.2%	-0.2%	-6.8%	-4.8%	0.1%	-2.7%	-8.3%	-3.3%	-2.1%	6.7%

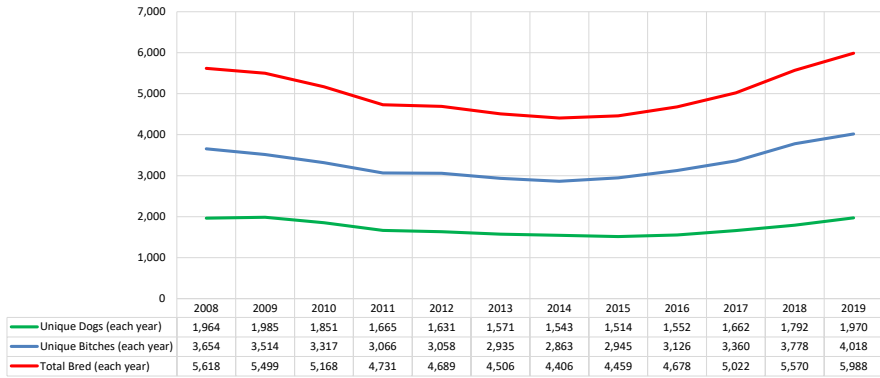
Performance: Total Unique Dogs Placing



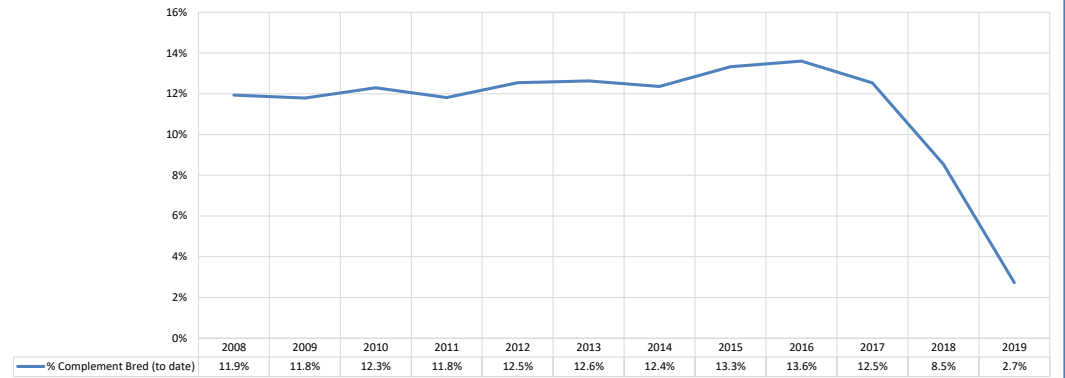
Companion: Total Unique Dogs Entered



Breeding: Unique Individual Dogs & Bitches Bred Each Year



% of Each Year's Litter Complement that have been Bred (to date)



Competing: % of Each Year's Litter Complement in Competition

